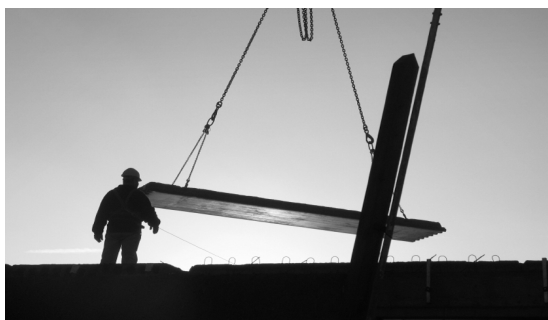




GETTING A MINISTRY STARTED

STARTER KIT



We're excited about you and your desire to touch the lives of college students. Campus Crusade ministries are growing on scores of campuses throughout the country. "Getting Started" is designed by the Student LINC (Leaders in New Campuses) ministry to help you begin a Campus Crusade for Christ movement on your campus.

Campus Crusade for Christ has three objectives: to WIN people to Christ, BUILD them in their faith and then SEND them to reach others.

As you begin your ministry, here are some things that will help you get started:

- Priorities to emphasize during your first six weeks.
- Qualities to look for in like-minded friends as you begin your ministry.
- Transformational Community article

This information will help you begin a Campus Crusade for Christ ministry of evangelism and discipleship on your campus. Let us know how we can help by calling us at 1-800-678-LINC (5462) (East Coast Time) or email us at <studentlinc@uscm.org>.

TOP PRIORITIES

1. Pray!

- Invest time in prayer with like-minded friends, asking God to guide you each step of the way. (Colossians 4:2)
- Ask God to show you which steps of faith to take to reach your campus for Christ. (Matthew 21:12)
- Thank Him for the privilege of being involved in something that's eternally significant. (1 Corinthians 3:10-15)
- Begin praying for students (by name) to receive Christ as their Savior and Lord and ask God to develop the necessary leadership for the movement. (Matthew 28:18-20)
- Pray for students to grow deeply in their faith and develop a passion for reaching your campus.

2. Call

Get in touch with your Campus Crusade staff coach for more information about reaching your campus for Christ. If you can't remember who that is, call 1-800-678-5462.

3. Publicize

Spread the word by using surveys and posters. Ready-to-use posters are available for downloading from www.CruPressGreen.com. Or, you can call your staff coach.

4. Gather

Bring interested students together. Start Bible studies or cell groups and begin forming the core leadership group. As this group forms, take time to plan and pray for your outreach and growth next month (Luke 6:12).

In terms of priority, it's much more important to get several small cell groups started than to work on becoming a recognized organization.



Begin with reading the “Reaching Your Campus Through Cell Groups” and “Transformational Community” articles included in this Starter Kit.

Then, try actually forming a cell group—that’s when real learning takes place and growth begins!

5. Involve further

Show students how to communicate their faith in Christ to others. Help them make appointments to talk with their friends about Christ. This builds commitment and stretches their faith. Training materials are available through the Student LINC office and CruPressGreen.com.

Note: These are only guidelines based on years of experience. However, each campus is different and the way a ministry grows will vary. So be creative, flexible and trust God.

QUALITIES THAT COUNT

Look for friends who...

...are theologically sound.

Seek people who are in agreement with the Campus Crusade for Christ “Statement of Faith.”

...have Godly character.

One factor that can greatly influence a movement’s growth is the quality of the leadership. Leaders should demonstrate spiritual, social and emotional maturity as well as common sense. Their hearts should reflect a sincere love for others. They should also show initiative and a desire to lead. Ambition, however, should be balanced out with a teachable, serving heart that seeks only to glorify the Lord. (1 Timothy 1:5 and 2 Timothy 2:2)

Continually ask God for guidance as you involve others in this ministry. And remember, God does not use only the most “gifted” individuals. He often accomplishes great things through the efforts of average people who are faithful, available and teachable. (1 Corinthians 1:18–2:5)

...are ministry minded.

Seek those who have a “heart for ministry”—people who have a burden for those who do not know Christ personally and a desire to see lives changed. Effective evangelistic and discipleship skills and strategies are important. They should share your vision and passion to reach the campus for Christ. Campus Crusade

isn’t merely a “club” nor is it just a fellowship group. As mentioned, our goal is to WIN people to Christ, BUILD them in their faith, and then SEND them to win and build others for Christ. (Matthew 28:18–20, Mark 16:15, 2 Timothy 2:2)

OTHER CHRISTIAN GROUPS

Maintain good relations with other Christian groups. In order to do this, establish good communication, develop your own leadership (don’t recruit leadership from another ministry), and pray for them (Philippians 1: 27–30).