



Helping You Express the Kindness
of Jesus in the Toughest Places



GAIN[®] MINISTRY REPORT 2018

God's Kindness on Display

YES. What a word. Because of the partnership and prayers of people like you, this year Global Aid Network® (GAIN®) served more people in tough places than ever before in the history of our organization — more than 7.5 million people in 30 countries.

We said “yes” to the requests of our Cru® field staff members and their partners. Yes to serving people in more countries. Yes to providing people with more clean water. Yes to giving hungry people more food. Yes to supplying people with more critical aid.

As you read the pages of this report, celebrate how your partnership relieves suffering, restores dignity, and reveals hope. Our programs help open doors to new communities, building relationships that help meet people’s deepest needs.

Our task, simply put, is to provide humanitarian assistance and express the kindness of Jesus so more people can know His eternal hope, mercy, and grace.

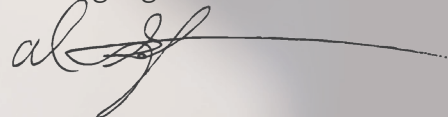
Some highlights of 2018 include:

- In one location in **Africa** 12 generations of churches are growing where a water well was dug.
- Thousands of people in the **Middle East** were provided Refugee Hope Kits.
- New partnerships with 300 **Peruvian** churches allow them to serve better using supplies we send.
- Athletes in **Guatemala** received sporting equipment, which helps Athletes in Action® staff members develop relationships and begin conversations with players off the field.
- Thousands of hurricane victims were served through a partnership with GAIN and the campus partners of Cru as we provided disaster relief in **Puerto Rico** and **Houston**.

These are only a few examples of how you made it possible for us to say yes and share the kindness of Jesus in the toughest places on earth. We are grateful for new opportunities and boldly ask the Lord to provide even more in the upcoming year. Join us as we anticipate more stories of God’s faithfulness from around the globe resulting from these initiatives as He pours out His goodness.

Thank you for your prayers, gifts, expertise, and time. By making yes our answer at every opportunity, 2019 will be a pivotal year — for the ministry, for partners like you, and for those we serve.

Serving together,



Al Goff,
President and CEO, Global Aid Network

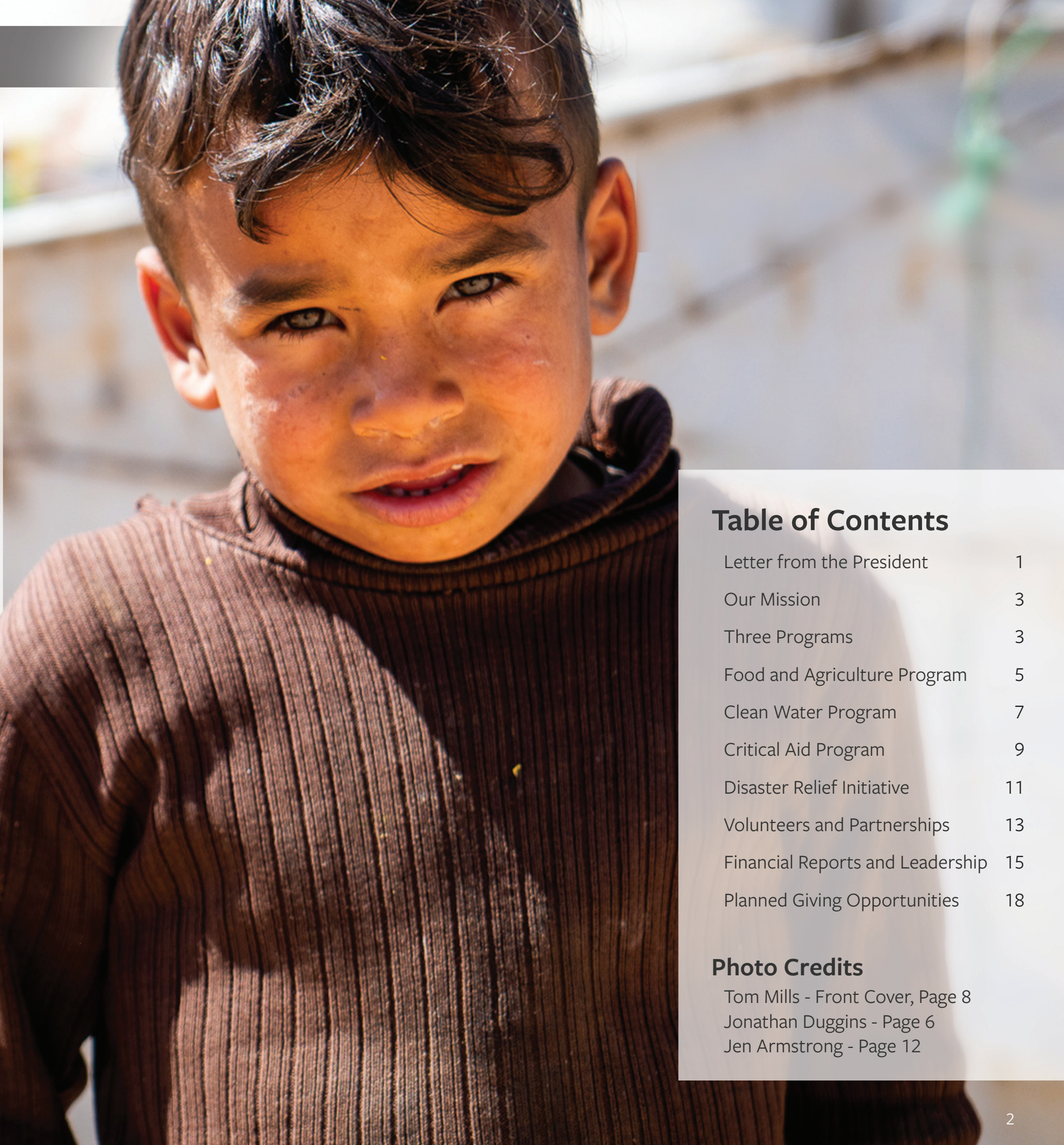


Table of Contents

Letter from the President	1
Our Mission	3
Three Programs	3
Food and Agriculture Program	5
Clean Water Program	7
Critical Aid Program	9
Disaster Relief Initiative	11
Volunteers and Partnerships	13
Financial Reports and Leadership	15
Planned Giving Opportunities	18

Photo Credits

Tom Mills - Front Cover, Page 8
Jonathan Duggins - Page 6
Jen Armstrong - Page 12

Expressing the Kindness of Jesus in the Toughest Places

Our Mission

As the humanitarian partner of Cru, GAIN expresses the kindness of Jesus in the toughest places on earth by relieving suffering, restoring dignity, and revealing hope.

Our partners at Cru work in more than 191 countries in the world. We accomplish our mission, in partnership with international Cru partners, through three programs:

Food and Agriculture Clean Water

Around the globe, hunger and malnutrition claim lives and cripple communities. The Food and Agriculture Program at GAIN provides rice and bean meals, seed packs, and nutritional food for distribution by in-country partners to communities that need food most.

Shortages of safe, clean water and a lack of sanitation and hygiene create the most significant source of suffering on earth. The Clean Water Program at GAIN leverages partnerships with community leadership to develop and carry out safe water and sanitation projects — deep wells, water filters, and hygiene training.

Critical Aid

Impoverished or displaced people need basic care to help them build a better and brighter future. As part of our Critical Aid Program, GAIN and our partners throughout the developing world provide essentials including health-related items, blankets, clothing, shoes, and school supplies.

Our Relationship with Cru

The humanitarian programs at GAIN are crucial to the strategy of equipping Cru partners as they seek to express the kindness of Jesus in tangible ways to people they serve.

Since GAIN began in 2003, our unifying purpose has been, and always will be, to help fulfill the Great Commission. Jesus gave us the command to go and make disciples of all nations — and this requires the entire body of Christ working together to make it happen.

By enhancing the work of Cru partners with humanitarian assistance and coaching, GAIN helps provide them with access to people groups who might otherwise not be served. We also help our partners build credibility in the eyes of governments and authorities. In many cases humanitarian aid is the main reason their work is allowed to continue.



The Gift of Food Begins a Bond of Hope

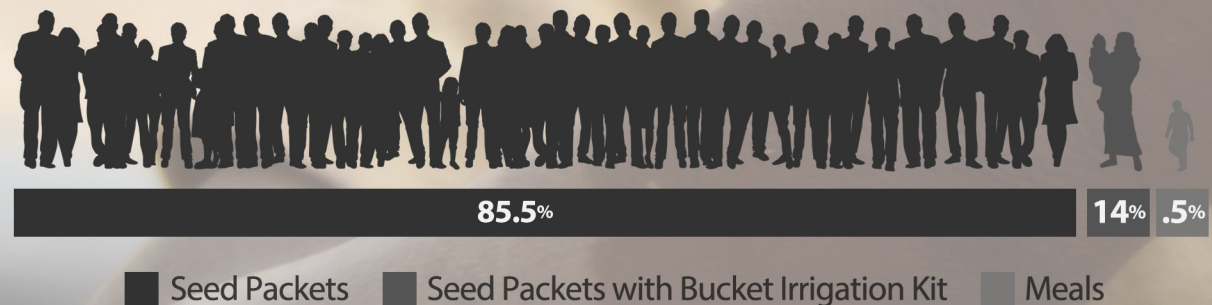
In an agricultural country of Central Asia, shepherd families earn a living herding flocks of sheep for multiple farmers. During summer months they move their family and the herds into the mountains to graze on healthier grass. These shepherd families are typically very poor.

GAiN field team members are reaching out to these families and building strong relationships with them. One shepherdess made a life-changing decision and accepted the message about the hope of Jesus through relationships built with the local church and the people on our team. She asked our team to bring a supply of food and other items to her husband and son so they too could have the same opportunity for hope that she had.

While sharing a meal with this shepherd family, our team members developed a bond with the son that allowed them to share about the hope of Jesus. As a result, he too made a life-changing decision.

Through gifts of food, both meals and seeds, connections are being made with people in Central Asia as well as in other areas such as East Africa, the Middle East, and South Sudan in response to the famine crisis. Food and other essential supplies are opening doors for our teams to develop relationships with people who are hungry for a better life and the hope available in Jesus.

Approximately 7,005,227 benefited from the Food and Agriculture Program



Families in Chad No Longer Need to Resort to Unsafe Water

Until recently children in a remote village of Chad faced a dreadful daily task: searching for water in a place where clean water is scarce. Finding water took long hours and was often dangerous in the 105-degree heat. If water was discovered, it was almost certainly contaminated with diseases that cause diarrhea, dysentery, and cholera. Children are especially vulnerable. But families in the village of Koli had no other choice. They had to settle for whatever they could find, even if it meant drinking diseased water.

Making matters worse, the villagers could only grow crops three months out of the year when brief rains blew through. So food eventually became almost as scarce as water, leaving them thirsty and hungry.

Thankfully all of this is changing because of the support of caring friends like you. Through your generosity GAIN installed a new water well and a generator for fast, efficient pumping. Now children and families can access safe, clean water any time. And they can grow food year-round.

As part of the strategy of local partners, a new church was established at the location of the well, and it is growing rapidly.

The provision of clean water continues to create abundant opportunities for meeting people's physical and spiritual needs.



Approximately 90,984 people benefited from the Clean Water Program



■ Repaired Wells (87) ■ Water Filters (5,212) ■ New Wells (22)

Hope for the Outcast

A Pair of Glasses Solves a Real Problem for a Refugee Boy

Nine years old and covered in bruises, Aimar walked into a vision clinic hosted by GAIN and local field team members. A local doctor was in the room too. Though the purpose of the clinic was to test people's eyesight, our team could not overlook the scrapes and bruises. They called the doctor over to meet Aimar and talk with him in his own language.

In the course of conversation, Aimar revealed that he was a refugee who had come to the clinic alone. When the doctor gently brought up the question of his injuries, the boy's response was simple: "I fall down a lot."

"I fall down a lot" sounded suspicious to everyone present — until they tested his sight. From 10 feet away he could not see the top line of the eye chart. From 4 feet away he could not tell how many fingers people held up. His sight was so bad that by U.S. standards, he would be considered legally blind.

Aimar was serious when he told the doctor he fell down a lot. At 9 years old he was covered in bruises because he literally could not see things right in front of him.

Providing someone with glasses he could not otherwise acquire is an extremely tangible act of kindness. Think of how radically young Aimar's life was changed. He left the vision clinic that day able to see clearly and move freely, without fear of tripping over unseen hazards.

This year our in-country partners in the Holy Land, Rwanda, Tanzania, Uganda, the Middle East, and Central Asia held vision clinics that provided free glasses for more than 9,000 people with impaired vision. Because of your help, we are expressing the kindness of Jesus to adults and kids like Aimar in the toughest places on earth.



Approximately 581,730 people benefited from the Critical Aid Program



66%

24%

8%

2%

■ Disposable Medical Supplies ■ General Critical Aid ■ Hygiene Supplies ■ Mobility Aids

Hurricane Victim Received Helping Hands to Rebuild Her Home

Hurricane Maria hit Puerto Rico on September 20, 2017. The damage was extensive, especially in mountainous and rural communities. The island and its people endured wind and rain for more than 30 hours.

Amparo is an 86-year-old Puerto Rican woman whose home was wiped away by the storm, except for a small four-foot section of her kitchen. When our team met her, she had no hope of completing the reconstruction of her home on her own.

Along with Cru and GAIN staff members, a team of students helped rebuild her house, a project initiated by a local church that had been ministering to Amparo.

Many Cru students discovered meeting people's physical needs was an opportunity to build relationships as they also served on Puerto Rican college campuses. Conversations about the hope of Jesus naturally surfaced as they talked about their relief work on the island. Now our Puerto Rican field staff members have the ability to continue working and strengthening relationships with students on four college campuses for the first time.





Volunteers Play a Key Role in Expressing Kindness

This year more than 20,300 people volunteered with GAiN to pack and prepare supplies such as meals, seeds, and critical aid. More than 200 university students and other volunteers helped with disaster relief, and 79 people participated in international humanitarian trips where they joined our field partners to conduct vision clinics, plant gardens, provide mobility aids, and care for refugees. The time volunteers give is invaluable and has an eternal impact on the lives of countless individuals around the world.

Partnerships Make Humanitarian Work Possible

Individuals, churches, like-minded ministries, corporations, and Cru field staff members make up the partners who are central to GAiN's work. What role will you play in the story? Will you give, pray, or go?

GAiN Field Partners

create a strategy for relieving suffering and increasing ministry effectiveness. GAiN responds by engaging others who can help provide resources to meet those needs.



Financial Partners

provide funding that helps GAiN fill field partner requests for Food and Agriculture, Clean Water, and Critical Aid programs.

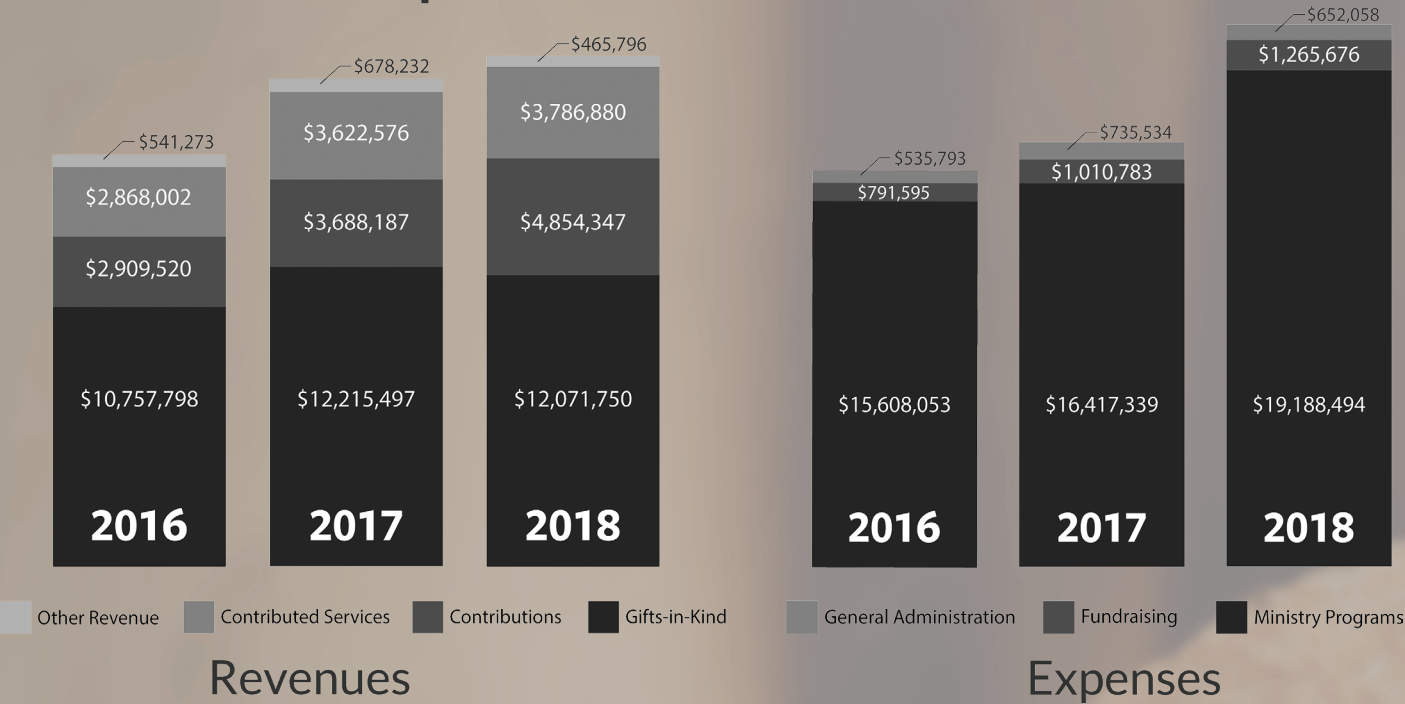
Other Partners

such as individuals, churches, and organizations provide prayer and financial support as well as volunteers who help prepare aid for shipment or travel for short-term ministry.

Gift-in-Kind Partners

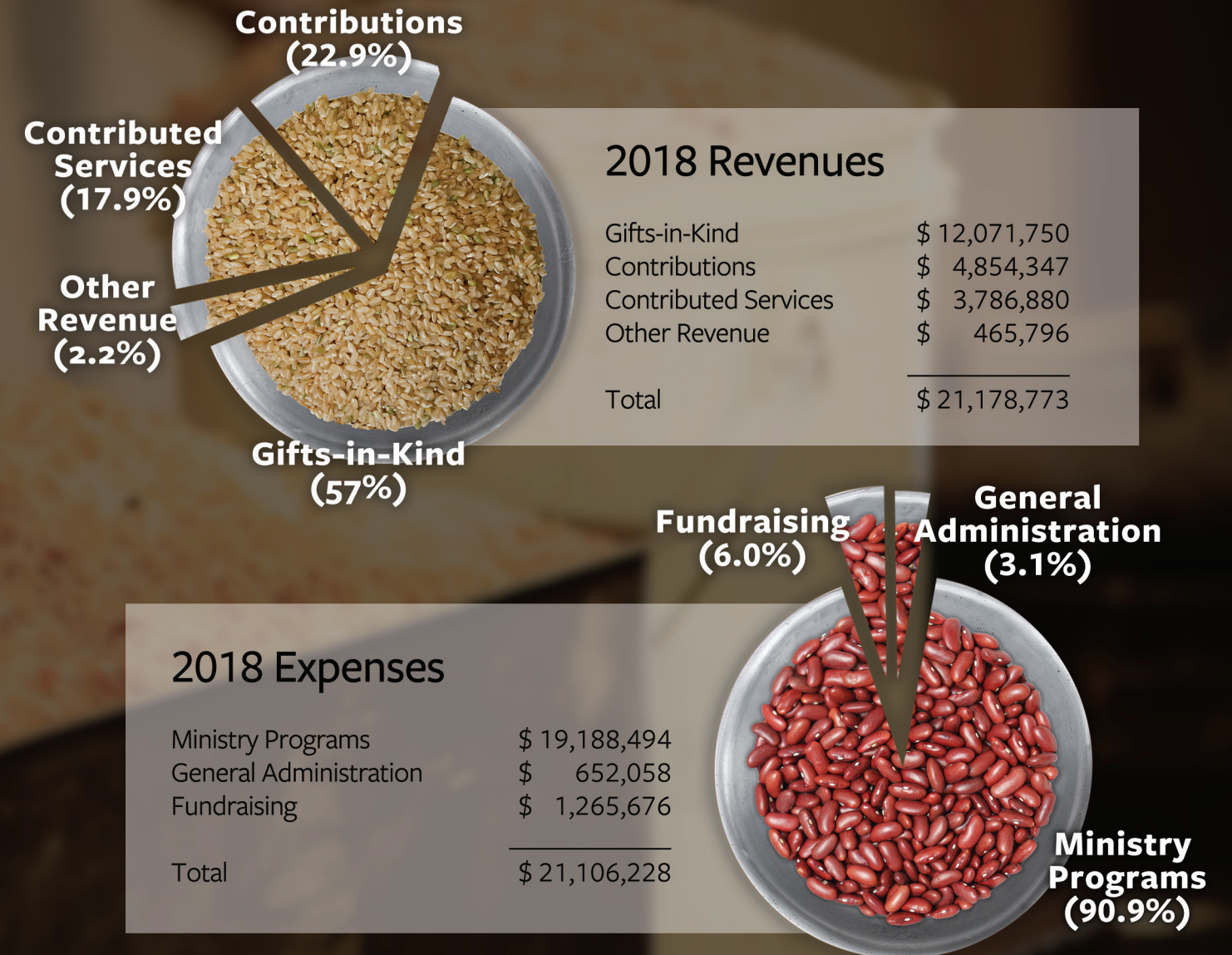
allow GAiN to leverage funding from financial partners. Because of donated goods, every \$1 given translates into \$10 worth of aid distributed.

Three-Year Comparison



Our Pledge to You

We seek to maintain the highest standards of integrity before the Lord and before you. GAIN abides by the Evangelical Council for Financial Accountability (ECFA) standards of responsible stewardship in its management of donations.



Officers of the Board

Al Goff, President and CEO
GAIN, Dallas, TX

Dave Weier, Controller (GAIN)
Cru, Orlando, FL

Mark Tjernagel, CFO
Cru, Orlando, FL

Sally Hauer, Secretary
Cru, Orlando, FL

Board of Directors

Steven C. Sellers
Chairman of the Board, GAIN
Executive Vice President/COO, Cru
Cru U.S. National Director

Al Goff
President and CEO, GAIN

Doug Briley
President and CEO, Warren Douglas Advertising

Charles Chappell
Senior Director, The Hershey Company

Dr. Jennifer Culver
Physician

Mark Gauthier
Vice President of Cru
Executive Director, U.S. Campus Ministry

Darryl Smith
Director of Oneness and Diversity, Cru

Leadership Team

Al Goff, President and CEO
Phil Liller, Global Supply Chain Operations
Robert Newkirk, Field Strategy and Operations

Michelle Oney, Development and Marketing
Dave Weier, Finance



Complete audited GAIN® financial statements are available on our website at gainusa.org/financials.



Meet Needs Worldwide in a Tax-Free Way

A Donor Advised Fund lets you receive a deduction now and make grants later

A Donor Advised Fund functions much like a private foundation but offers more attractive options when it comes to realizing your personal charitable objectives. With a Donor Advised Fund, costs and administration are shared and minimized. You may claim a charitable income tax deduction and may not have to pay any capital gains, if the gift is of appreciated property. You also have the flexibility to give to the charities of your choice now or over time.

With the Donor Advised Fund from GAIN and The Cru Foundation®, you will receive wise counsel and personalized service from one of our financial advisors. You will also be able to manage your account online, adding to the fund and making grants to the ministries you care about most. The website and the personal advisor will give you the tools and knowledge you need to exercise greater stewardship of your investment toward expressing the kindness of Jesus to people around the world.

Potential Benefits

- Simplify your tax planning by consolidating all of your giving from one source.
- Unlike a private foundation, no mandatory distributions are required from a DAF.
- Any investment growth in the fund is tax free, so more can go to charity.
- The low minimum to open a fund makes it easy for all donors to participate.

For more information, visit GAINUSA.org/estate-planning or contact legacy@gainusa.org.

But when the goodness and loving kindness of God our Savior appeared, He saved us, not because of works done by us in righteousness, but according to His own mercy, by the washing of regeneration and renewal of the Holy Spirit . . .

Titus 3:4-5 (ESV)

The Kindness of Jesus in the Toughest Places



GAIN U.S. Headquarters | 2001 West Plano Parkway, Suite 2200 | Plano, TX 75075 | 1-800-778-7806 | 972-234-0800

The humanitarian partner of Cru®

